

USB Configuration Suite

Designed, manufactured and supported by:



Green Lane, Business Park, Green Lane
Tewkesbury Glos. G20 8DE. UK
Tel: +44 (0)1684 296818 Fax: +44 (0)1684 293746
Email: support@status.co.uk

Every effort has been taken to ensure the accuracy of this specification, however we do not accept responsibility for damage, injury, loss or expense resulting from errors and omissions, and we reserve the right of amendment without notice



1.0 DESCRIPTION

The USB Config unit provides a fully input/output isolated USB powered interface between an Windows XP computer and Status Instruments' line of loop configurable temperature transmitters.

Using a standard USB port the module enables the user to interrogate their temperature transmitter, including re-ranging and re-configuration using a simple Windows based interface.

2.0 RECEIVING AND UNPACKING

Please inspect the packaging and instrument thoroughly for any signs of transit damage. If the instrument has been damaged, please notify your supplier immediately.

USB Configurator Suite comprises:-

- 1 off USB Configurator Module
- 1 off USB A/M to Mini B/M Cable
- 1 off Cable 3.5 mm Socket to Pins
- 1 off Cable 3.5 mm Socket to Crocodile Clips
- 1 off Pen Drive
- 1 off Case

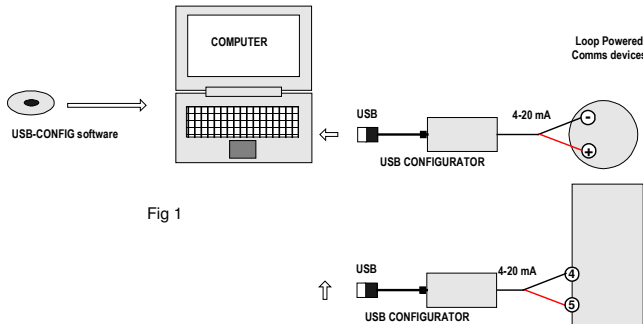
3.0 PRECAUTIONS

Do not allow the two terminal / crocodile clip connections on the output of the module to short together, the module provides 24V DC across these terminals in order to power the unit under configuration. Whilst the USB Config is protected by a self-resetting fuse certain models of PC are not protected against high current draw from their USB ports and damage could be caused if the user is not careful.

Do not attempt to configure anything but a Status Instruments Ltd temperature transmitter; doing so could damage the USB Configurator as well as the host computer.

Do not use the USB Config unit as a power supply, and ensure that it is not (accidentally or intentionally) used to power a process loop or any other equipment.

4.0 OPERATION



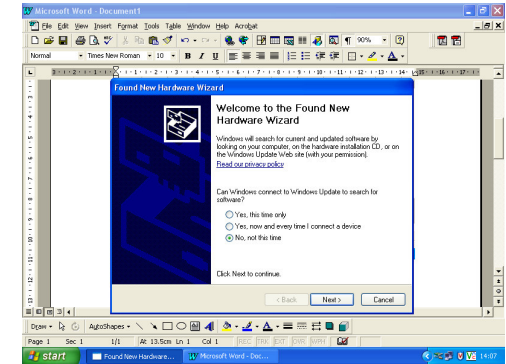
4.1 To use your USB Config module you will first need to install the relevant software (M-Config) which is available as a free download from www.status.co.uk or it can be installed from the USB Pen Drive which is supplied with your USB Config kit.

4.2 Insert the pen drive into a USB port. Double click the M-Config Icon. (If Windows doesn't open the file use 'Windows Explorer'.)

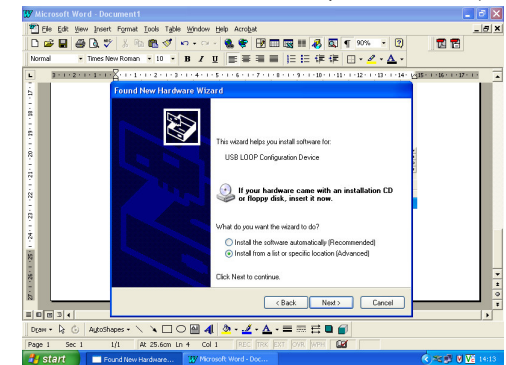
4.3 Follow the on screen instruction then restart the computer on completion of this installation.

4.4 On installing the software, connect the USB link module to the PC using the USB cable supplied. Your PC will now inform you that it has found new hardware

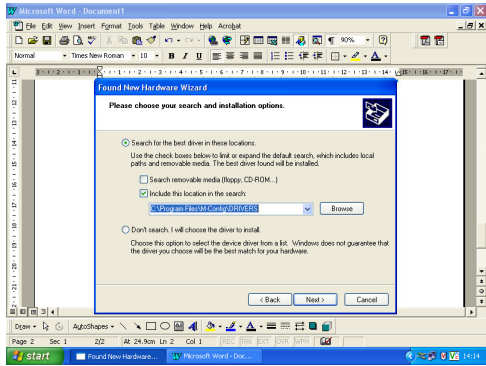
4.5 Select the option "No, not this time"



4.6 Select "Install from a list or specific location (Advanced)"

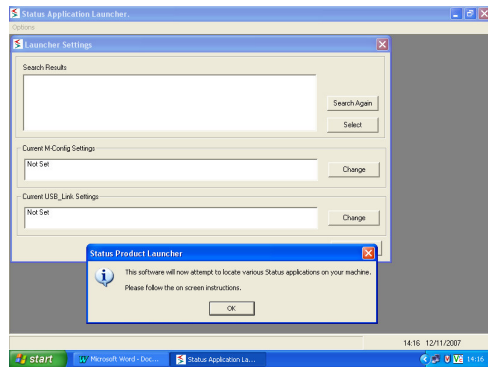


4.7 Browse for folder containing driver “M-Config\drivers”

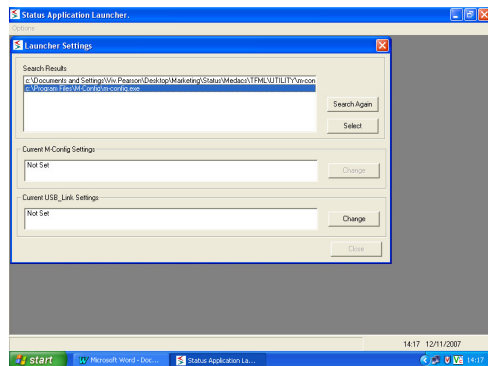


4.8 Click “Finish”, then double click ‘Status Application Launcher’ on the desktop.

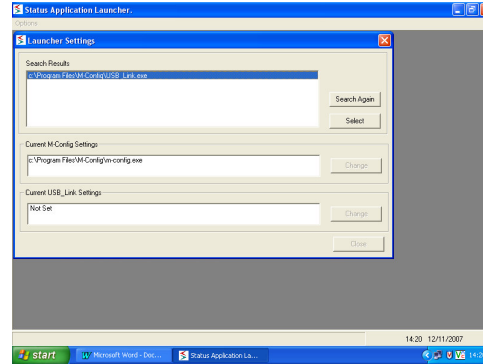
4.9 Click “OK” to configure Launcher Settings.



4.10 Select “M-Config\m-config.exe”



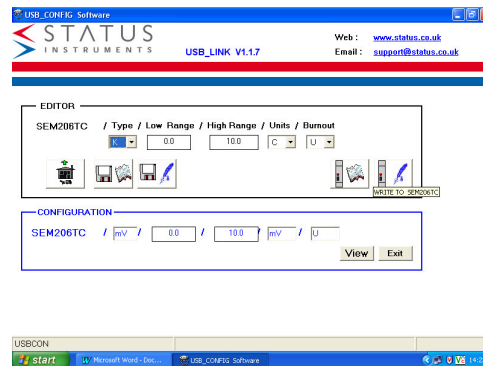
4.11 Click “Select” and repeat for the USB Link exe, then Select “Close”



4.12 Attach 206 as diagram below and click “SEARCH”



4.13 The Software will automatically sense the device and then able you to configure it to your requirements.



4.14 The software will also configure the 1600 Series. To achieve this connect the Device either through the USB Cable provided or for the 1603 as in Fig 1. Then repeat 4.5 to 4.8

5.0 General Information

The USB Config module is powered completely from the USB port on your computer, you do not require an external 24V DC power supply as you did with previous versions. It is not recommended to leave the module plugged into laptop computer for long periods of time when the laptop is running on batteries as this will effect battery live adversely, especially if a unit is left connected to the configurator.